

# print&media

## FACE TO FACE

### PRINT&MEDIA SEMINARS



Professional seminars for industry professionals. Networking and exchange of ideas with decision-makers.

### SIGN, PRINT & PROMOTION EXHIBITION



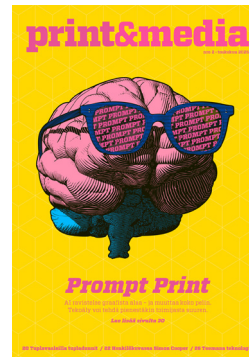
Exhibition for graphic, visual communication, packaging and promotion professionals since 2018.

**Year 2026:**  
4 309 unique visitors

**Next Exhibition:**  
15.-16. March 2028

## PRINTED MAGAZINE

### PRINT&MEDIA MAGAZINE



Printed magazine for professionals.  
6 issues / year

**Readers:**  
7 800 / issue

**Distribution:**  
average 1 800

## DIGITAL SERVICES

### PMLEHTI.FI WEB + WEEKLY NEWSLETTER

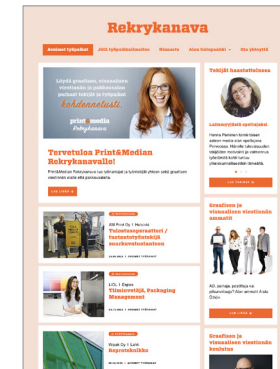


Daily news from the graphic, visual communication and packaging industry.

**Web followers:**  
average 7 000 / month

**Newsletter recipients:**  
Approx. 12 000 weekly

### PRINT&MEDIA RECRUITMENT CHANNEL



Print&Media Recruitment Channel brings together employers and employees from the graphic, visual communication and packaging industry.